

PART OF THE NW 1/4 OF SEC. 22, T.5N. R.2W., S.L.B. 3 M.
COUNTRY AIRE SUBDIVISION

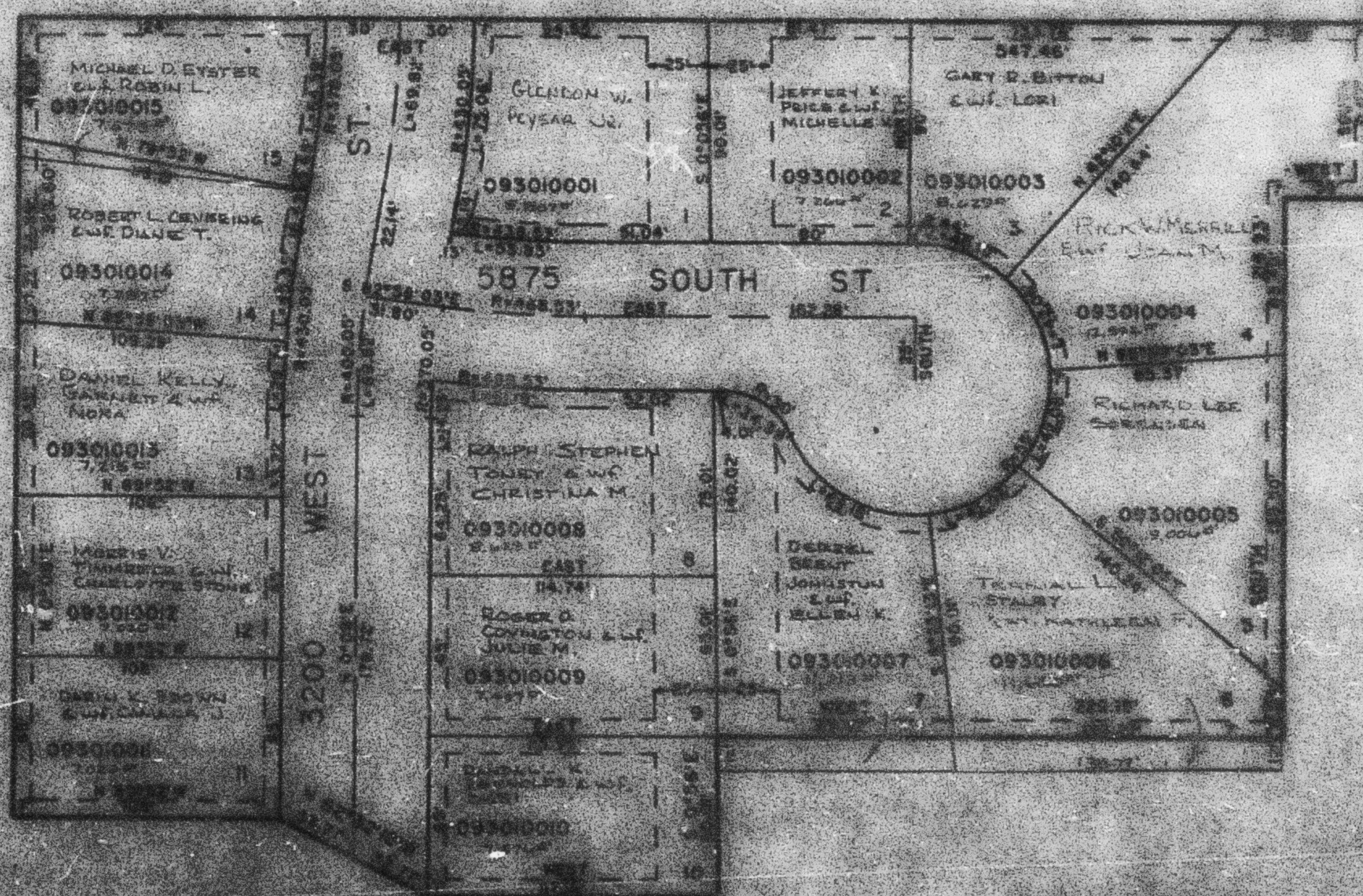
LOTS 1-15

IN BOY CITY

SEAL 17 TO 50

SEE PAGE 272

SEE
PAGE
88



SEE PAGE 89

SEE PAGE 88